



In-line centrifugal duct fans suitable for wide range of general residential, commercial and industrial exhaust or supply ventilation applications.

#### Description

Circular in-line duct fans from 100 to 400 mm diameter. Models are suitable for mounting in any orientation and operation within ambient air temperatures between -20°C up to +40°C. Comprehensive range of accessories to ease the installation and control the fan performances.

#### Construction

Fan casing manufactured from high-grade corrosion-resistant pressed galvanised steel, with black polyester paint coating. Fully airtight sealed assembly. Direct drive centrifugal impeller. Brushless EC motor, IP44, with thermal overload protection, suitable for single phase supply 230V +/- 15%/50-60Hz. Fan speed adjustable with the potentiometer placed in the connection box or with an external control type REB-ECOWATT. Analogue input with terminals in the terminal box to control the fan with 0-10V input signal.



**Mounting foot**  
Supplied with unit as standard (Models 100 to 315).



**Models 355 and 400.**

# CIRCULAR DUCT FANS

## VENT ECOWATT Series



### TECHNICAL CHARACTERISTICS

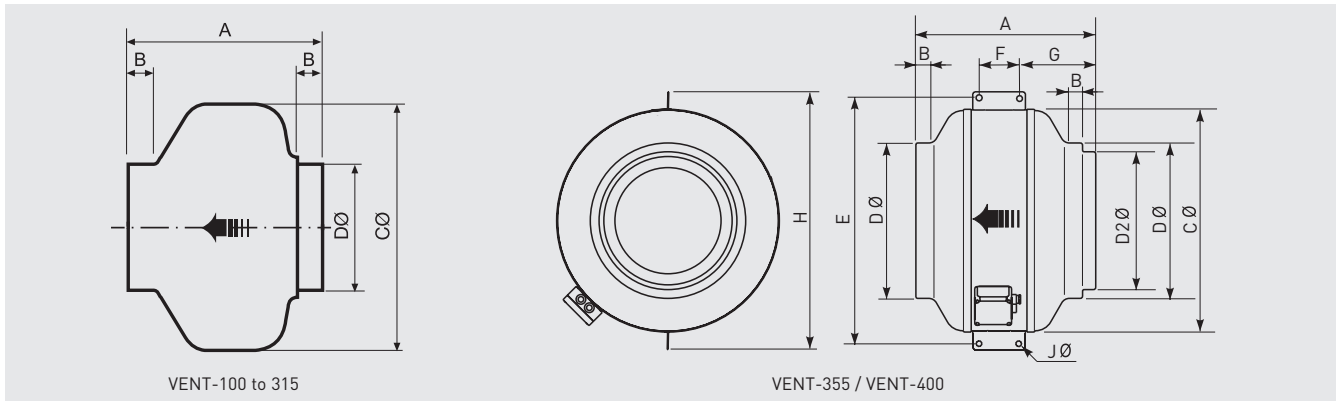
Before installation check that the product electrical characteristics listed on the data plate label (voltage, power, frequency, etc.) match those of the intended electrical supply.

| Model            | Signal voltage (V) | Speed (rpm) | Maximum absorbed power (W) | Maximum absorbed current (A) | Maximum airflow (m³/h) | Sound pressure level LpA @ 3m* (dB(A)) |          |        | Weight (kg) | Wiring diagram** (n°) |
|------------------|--------------------|-------------|----------------------------|------------------------------|------------------------|--|----------|--------|-------------|-----------------------|
|                  |                    |             |                            |                              |                        | Inlet                                  | Radiated | Outlet |             |                       |
| VENT-100 ECOWATT | 10                 | 2810        | 61                         | 0,40                         | 300                    | 50                                     | 41       | 48     | 4,0         | 49                    |
|                  | 8                  | 2325        | 41                         | 0,30                         | 250                    | 47                                     | 38       | 43     |             |                       |
|                  | 6                  | 1790        | 22                         | 0,20                         | 200                    | 38                                     | 34       | 38     |             |                       |
|                  | 4                  | 1310        | 12                         | 0,10                         | 150                    | 31                                     | 29       | 31     |             |                       |
| VENT-125 ECOWATT | 10                 | 2800        | 65                         | 0,50                         | 380                    | 50                                     | 41       | 48     | 4,0         | 49                    |
|                  | 8                  | 2330        | 46                         | 0,30                         | 330                    | 46                                     | 38       | 44     |             |                       |
|                  | 6                  | 1780        | 24                         | 0,20                         | 250                    | 40                                     | 35       | 38     |             |                       |
|                  | 4                  | 1275        | 12                         | 0,10                         | 180                    | 32                                     | 29       | 31     |             |                       |
| VENT-150 ECOWATT | 10                 | 2910        | 115                        | 0,80                         | 660                    | 57                                     | 38       | 55     | 5,0         | 49                    |
|                  | 8                  | 1550        | 80                         | 0,60                         | 580                    | 54                                     | 38       | 52     |             |                       |
|                  | 6                  | 1910        | 36                         | 0,30                         | 420                    | 47                                     | 34       | 44     |             |                       |
|                  | 4                  | 1360        | 16                         | 0,10                         | 300                    | 37                                     | 24       | 35     |             |                       |
| VENT-160 ECOWATT | 10                 | 2860        | 109                        | 0,80                         | 710                    | 56                                     | 37       | 55     | 5,0         | 49                    |
|                  | 8                  | 2430        | 70                         | 0,50                         | 590                    | 53                                     | 40       | 52     |             |                       |
|                  | 6                  | 1860        | 34                         | 0,30                         | 450                    | 46                                     | 33       | 44     |             |                       |
|                  | 4                  | 1330        | 16                         | 0,10                         | 320                    | 37                                     | 28       | 36     |             |                       |
| VENT-200 ECOWATT | 10                 | 2580        | 136                        | 0,90                         | 920                    | 54                                     | 35       | 54     | 5,0         | 49                    |
|                  | 8                  | 2260        | 92                         | 0,70                         | 800                    | 49                                     | 32       | 50     |             |                       |
|                  | 6                  | 1750        | 46                         | 0,30                         | 630                    | 43                                     | 28       | 44     |             |                       |
|                  | 4                  | 1300        | 22                         | 0,20                         | 450                    | 36                                     | 24       | 36     |             |                       |
| VENT-250 ECOWATT | 10                 | 2580        | 137                        | 0,90                         | 1030                   | 56                                     | 39       | 57     | 6,0         | 49                    |
|                  | 8                  | 2210        | 87                         | 0,60                         | 880                    | 52                                     | 35       | 54     |             |                       |
|                  | 6                  | 1740        | 45                         | 0,30                         | 700                    | 45                                     | 29       | 49     |             |                       |
|                  | 4                  | 1280        | 22                         | 0,20                         | 520                    | 39                                     | 24       | 49     |             |                       |
| VENT-315 ECOWATT | 10                 | 2160        | 184                        | 1,20                         | 1440                   | 57                                     | 41       | 58     | 8,0         | 49                    |
|                  | 8                  | 1940        | 136                        | 0,90                         | 1300                   | 54                                     | 39       | 56     |             |                       |
|                  | 6                  | 1590        | 76                         | 0,50                         | 1040                   | 49                                     | 35       | 50     |             |                       |
|                  | 4                  | 1190        | 35                         | 0,20                         | 790                    | 42                                     | 28       | 44     |             |                       |
| VENT-355 ECOWATT | 10                 | 1410        | 248                        | 1,00                         | 2620                   | 53                                     | 43       | 55     | 17,0        | 49                    |
|                  | 8                  | 1260        | 178                        | 0,80                         | 2310                   | 50                                     | 39       | 52     |             |                       |
|                  | 6                  | 1060        | 109                        | 0,50                         | 1940                   | 47                                     | 36       | 48     |             |                       |
|                  | 4                  | 860         | 63                         | 0,30                         | 1590                   | 43                                     | 32       | 43     |             |                       |
| VENT-400 ECOWATT | 10                 | 1400        | 376                        | 1,60                         | 3390                   | 55                                     | 44       | 58     | 22,0        | 49                    |
|                  | 8                  | 1240        | 266                        | 1,10                         | 3000                   | 52                                     | 42       | 54     |             |                       |
|                  | 6                  | 1050        | 162                        | 0,70                         | 2530                   | 47                                     | 37       | 49     |             |                       |
|                  | 4                  | 870         | 96                         | 0,40                         | 2070                   | 41                                     | 33       | 43     |             |                       |

\* Sound pressure level measured in free field condition at 3m, at the medium working point on the performance curve, shown 2, 5, 8 and 11.

\*\* See section of Wiring Diagrams.

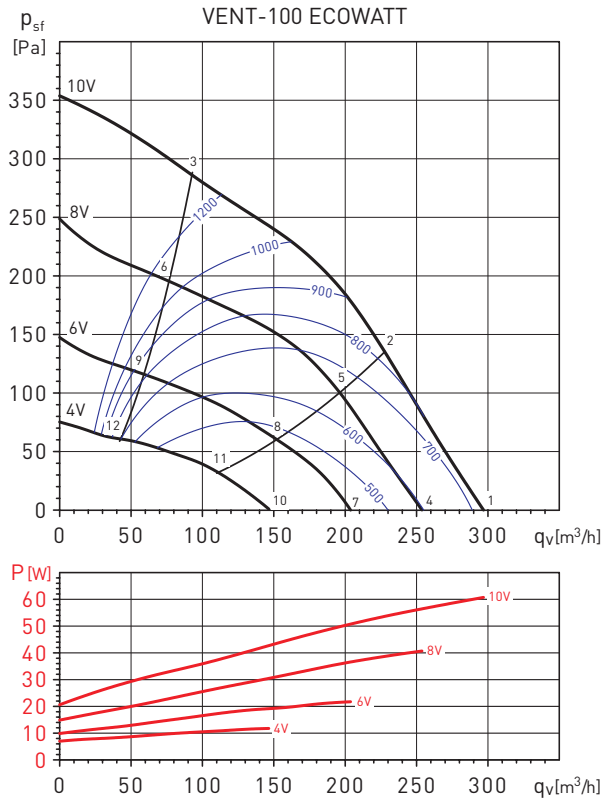
**DIMENSIONS (mm)**



| Model            | A   | B  | C   | D   | D2  | E   | F   | G   | H   | J  |
|------------------|-----|----|-----|-----|-----|-----|-----|-----|-----|----|
| VENT-100 ECOWATT | 251 | 23 | 243 | 98  |     |     |     |     |     |    |
| VENT-125 ECOWATT | 253 | 27 | 243 | 123 |     |     |     |     |     |    |
| VENT-150 ECOWATT | 214 | 24 | 333 | 147 |     |     |     |     |     |    |
| VENT-160 ECOWATT | 222 | 28 | 333 | 157 |     |     |     |     |     |    |
| VENT-200 ECOWATT | 223 | 25 | 333 | 198 |     |     |     |     |     |    |
| VENT-250 ECOWATT | 206 | 27 | 333 | 248 |     |     |     |     |     |    |
| VENT-315 ECOWATT | 230 | 25 | 401 | 312 |     |     |     |     |     |    |
| VENT-355 ECOWATT | 410 | 25 | 508 | 354 | 314 | 410 | 100 | 170 | 587 | 11 |
| VENT-400 ECOWATT | 441 | 25 | 568 | 399 | 354 | 441 | 100 | 185 | 647 | 11 |

**PERFORMANCE CURVES - ACOUSTIC CHARACTERISTICS**

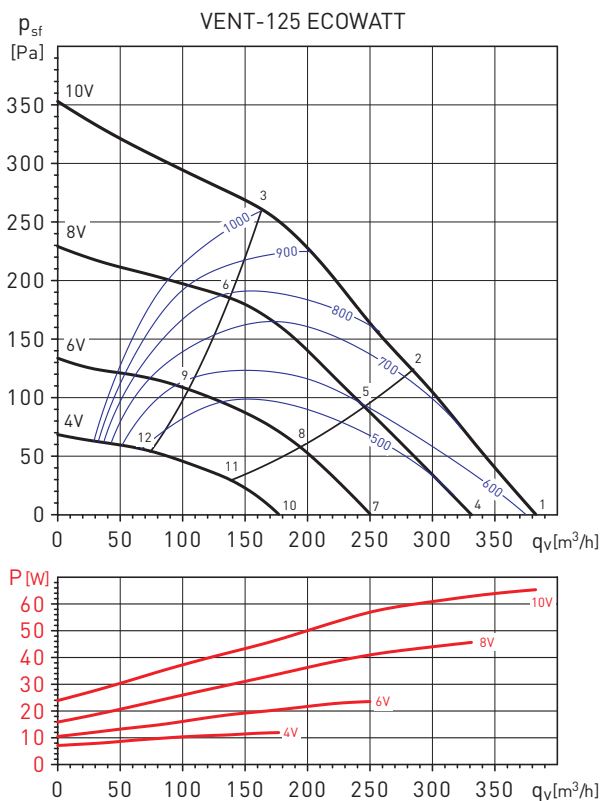
- $q_v$ : Airflow in  $m^3/h$ .
- $p_{sf}$ : Static pressure in Pa.
- P: Input power in W.
- SFP: Specific fan power in  $W/m^3/s$  (blue curves).
- Performance data in accordance with ISO 5801:1997.



| Working point |          | 63 | 125 | 250 | 500 | 1000 | 2000 | 4000 | 8000 | LwA |
|---------------|----------|----|-----|-----|-----|------|------|------|------|-----|
| 1             | INLET    | 42 | 53  | 62  | 65  | 68   | 63   | 53   | 44   | 71  |
|               | OUTLET   | 41 | 52  | 67  | 64  | 61   | 63   | 54   | 46   | 71  |
|               | RADIATED | 38 | 52  | 59  | 54  | 57   | 56   | 42   | 37   | 63  |
| 2             | INLET    | 39 | 48  | 58  | 64  | 67   | 62   | 52   | 44   | 70  |
|               | OUTLET   | 38 | 47  | 61  | 62  | 60   | 62   | 51   | 40   | 68  |
|               | RADIATED | 35 | 47  | 55  | 53  | 56   | 56   | 41   | 27   | 61  |
| 3             | INLET    | 10 | 46  | 56  | 63  | 65   | 60   | 53   | 48   | 68  |
|               | OUTLET   | 10 | 46  | 56  | 62  | 58   | 59   | 49   | 39   | 65  |
|               | RADIATED | 26 | 45  | 53  | 52  | 54   | 53   | 42   | 31   | 59  |
| 4             | INLET    | 40 | 50  | 59  | 63  | 65   | 59   | 50   | 40   | 68  |
|               | OUTLET   | 38 | 47  | 63  | 60  | 56   | 57   | 49   | 39   | 66  |
|               | RADIATED | 33 | 47  | 55  | 49  | 55   | 54   | 37   | 24   | 60  |
| 5             | INLET    | 36 | 45  | 55  | 63  | 63   | 57   | 48   | 40   | 67  |
|               | OUTLET   | 33 | 42  | 57  | 60  | 54   | 55   | 44   | 33   | 63  |
|               | RADIATED | 29 | 42  | 51  | 50  | 53   | 52   | 35   | 23   | 58  |
| 6             | INLET    | 29 | 40  | 56  | 62  | 60   | 55   | 49   | 43   | 66  |
|               | OUTLET   | 27 | 42  | 52  | 58  | 51   | 52   | 42   | 33   | 61  |
|               | RADIATED | 22 | 37  | 52  | 49  | 51   | 50   | 36   | 26   | 57  |
| 7             | INLET    | 35 | 42  | 52  | 55  | 56   | 50   | 39   | 29   | 60  |
|               | OUTLET   | 42 | 50  | 56  | 54  | 50   | 49   | 40   | 29   | 60  |
|               | RADIATED | 37 | 42  | 52  | 50  | 50   | 44   | 27   | 20   | 56  |
| 8             | INLET    | 32 | 41  | 50  | 54  | 54   | 48   | 38   | 30   | 58  |
|               | OUTLET   | 42 | 50  | 53  | 53  | 48   | 47   | 35   | 25   | 58  |
|               | RADIATED | 34 | 40  | 50  | 49  | 48   | 42   | 25   | 21   | 54  |
| 9             | INLET    | 29 | 40  | 49  | 52  | 51   | 46   | 39   | 32   | 56  |
|               | OUTLET   | 42 | 50  | 49  | 50  | 46   | 45   | 32   | 25   | 56  |
|               | RADIATED | 32 | 39  | 49  | 47  | 44   | 41   | 27   | 23   | 52  |
| 10            | INLET    | 31 | 38  | 45  | 47  | 49   | 40   | 28   | 23   | 52  |
|               | OUTLET   | 30 | 44  | 48  | 47  | 44   | 40   | 28   | 23   | 52  |
|               | RADIATED | 36 | 36  | 45  | 44  | 42   | 37   | 25   | 23   | 49  |
| 11            | INLET    | 29 | 38  | 45  | 46  | 48   | 39   | 28   | 24   | 51  |
|               | OUTLET   | 29 | 45  | 45  | 46  | 43   | 39   | 25   | 23   | 51  |
|               | RADIATED | 34 | 36  | 45  | 43  | 41   | 36   | 25   | 23   | 49  |
| 12            | INLET    | 21 | 36  | 43  | 43  | 46   | 40   | 29   | 24   | 50  |
|               | OUTLET   | 28 | 42  | 43  | 44  | 42   | 39   | 25   | 23   | 49  |
|               | RADIATED | 26 | 34  | 43  | 40  | 39   | 37   | 26   | 23   | 47  |

PERFORMANCE CURVES - ACOUSTIC CHARACTERISTICS

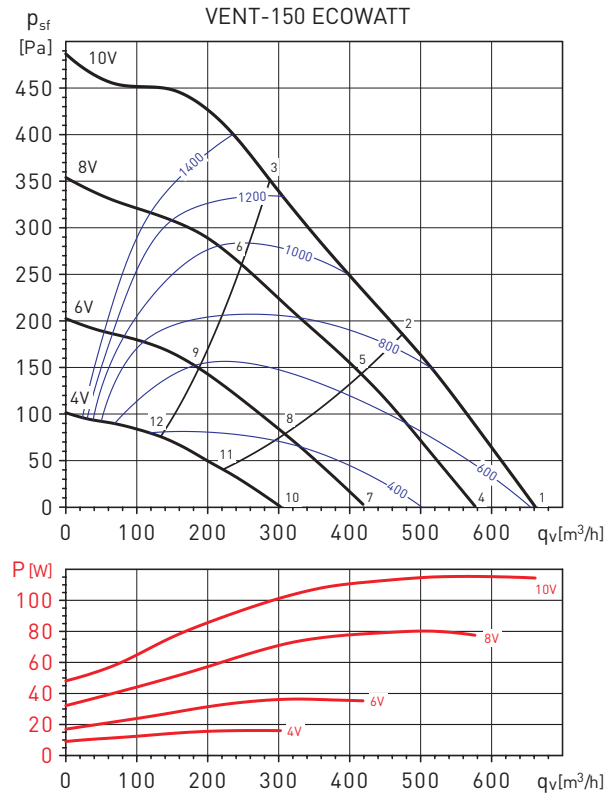
- $q_v$ : Airflow in  $m^3/h$ .
- $p_{sf}$ : Static pressure in Pa.
- P: Input power in W.
- SFP: Specific fan power in  $W/m^3/s$  (blue curves).
- Performance data in accordance with ISO 5801:1997.



| Working point |          | 63 | 125 | 250 | 500 | 1000 | 2000 | 4000 | 8000 | LwA |
|---------------|----------|----|-----|-----|-----|------|------|------|------|-----|
| 1             | INLET    | 39 | 48  | 60  | 66  | 69   | 65   | 56   | 44   | 72  |
|               | OUTLET   | 43 | 49  | 66  | 65  | 63   | 64   | 56   | 46   | 71  |
|               | RADIATED | 29 | 45  | 58  | 50  | 60   | 56   | 49   | 40   | 64  |
| 2             | INLET    | 37 | 45  | 57  | 64  | 66   | 62   | 52   | 40   | 70  |
|               | OUTLET   | 38 | 45  | 62  | 63  | 62   | 60   | 53   | 42   | 68  |
|               | RADIATED | 27 | 43  | 55  | 49  | 58   | 54   | 45   | 36   | 61  |
| 3             | INLET    | 31 | 46  | 61  | 65  | 66   | 61   | 50   | 40   | 70  |
|               | OUTLET   | 35 | 42  | 58  | 64  | 61   | 60   | 52   | 43   | 67  |
|               | RADIATED | 21 | 44  | 59  | 49  | 57   | 53   | 43   | 36   | 62  |
| 4             | INLET    | 36 | 45  | 56  | 64  | 65   | 61   | 52   | 39   | 69  |
|               | OUTLET   | 39 | 46  | 62  | 62  | 59   | 58   | 51   | 41   | 67  |
|               | RADIATED | 31 | 42  | 51  | 51  | 58   | 53   | 45   | 36   | 61  |
| 5             | INLET    | 34 | 42  | 53  | 61  | 62   | 58   | 47   | 35   | 66  |
|               | OUTLET   | 34 | 42  | 58  | 60  | 57   | 55   | 47   | 36   | 64  |
|               | RADIATED | 28 | 39  | 48  | 48  | 55   | 50   | 41   | 32   | 58  |
| 6             | INLET    | 27 | 39  | 59  | 61  | 60   | 56   | 44   | 33   | 66  |
|               | OUTLET   | 27 | 38  | 62  | 59  | 55   | 54   | 46   | 39   | 65  |
|               | RADIATED | 22 | 36  | 54  | 48  | 54   | 48   | 37   | 30   | 58  |
| 7             | INLET    | 31 | 45  | 54  | 57  | 58   | 53   | 43   | 30   | 62  |
|               | OUTLET   | 42 | 42  | 56  | 55  | 52   | 50   | 42   | 30   | 60  |
|               | RADIATED | 26 | 46  | 50  | 51  | 53   | 45   | 37   | 28   | 57  |
| 8             | INLET    | 28 | 44  | 54  | 54  | 55   | 49   | 38   | 26   | 60  |
|               | OUTLET   | 42 | 41  | 53  | 53  | 50   | 47   | 37   | 26   | 58  |
|               | RADIATED | 23 | 45  | 50  | 48  | 50   | 42   | 32   | 25   | 55  |
| 9             | INLET    | 25 | 40  | 52  | 54  | 54   | 48   | 35   | 25   | 59  |
|               | OUTLET   | 42 | 42  | 53  | 52  | 49   | 46   | 36   | 28   | 57  |
|               | RADIATED | 20 | 41  | 47  | 48  | 49   | 40   | 29   | 24   | 53  |
| 10            | INLET    | 30 | 42  | 47  | 48  | 49   | 42   | 32   | 24   | 54  |
|               | OUTLET   | 30 | 41  | 49  | 47  | 46   | 41   | 30   | 23   | 53  |
|               | RADIATED | 30 | 36  | 48  | 45  | 46   | 38   | 31   | 24   | 51  |
| 11            | INLET    | 27 | 39  | 46  | 46  | 47   | 39   | 29   | 23   | 52  |
|               | OUTLET   | 29 | 41  | 47  | 45  | 45   | 39   | 27   | 23   | 51  |
|               | RADIATED | 27 | 34  | 46  | 42  | 43   | 35   | 27   | 23   | 49  |
| 12            | INLET    | 28 | 43  | 44  | 45  | 46   | 38   | 28   | 23   | 51  |
|               | OUTLET   | 29 | 41  | 46  | 44  | 45   | 38   | 27   | 23   | 50  |
|               | RADIATED | 28 | 37  | 45  | 42  | 42   | 34   | 27   | 23   | 48  |

**PERFORMANCE CURVES - ACOUSTIC CHARACTERISTICS**

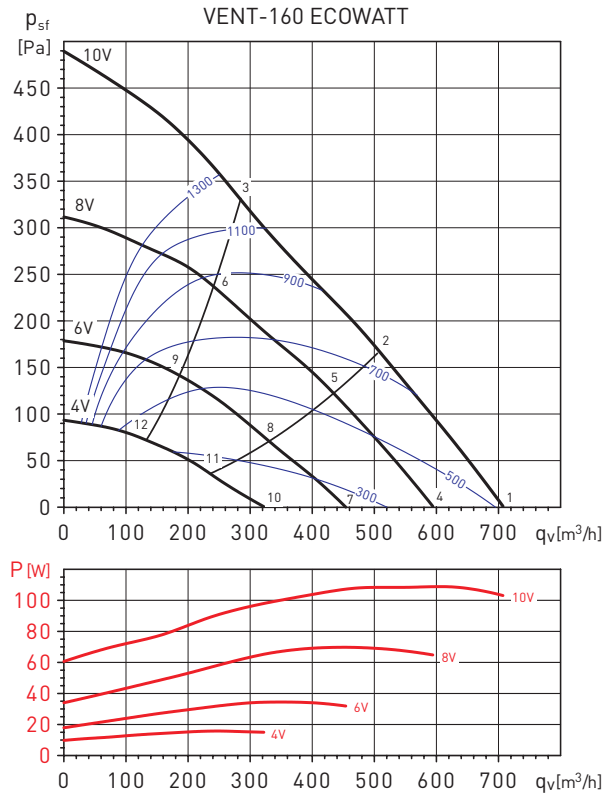
- $q_v$ : Airflow in  $m^3/h$ .
- $p_{sf}$ : Static pressure in Pa.
- P: Input power in W.
- SFP: Specific fan power in  $W/m^3/s$  (blue curves).
- Performance data in accordance with ISO 5801:1997.



| Working point |          | 63 | 125 | 250 | 500 | 1000 | 2000 | 4000 | 8000 | LwA |
|---------------|----------|----|-----|-----|-----|------|------|------|------|-----|
| 1             | INLET    | 44 | 52  | 65  | 74  | 73   | 69   | 64   | 54   | 78  |
|               | OUTLET   | 44 | 51  | 68  | 70  | 71   | 69   | 64   | 53   | 76  |
|               | RADIATED | 28 | 39  | 45  | 47  | 54   | 56   | 47   | 36   | 59  |
| 2             | INLET    | 43 | 53  | 66  | 74  | 72   | 68   | 62   | 52   | 77  |
|               | OUTLET   | 42 | 53  | 69  | 69  | 70   | 67   | 61   | 51   | 75  |
|               | RADIATED | 27 | 40  | 46  | 47  | 53   | 54   | 44   | 34   | 58  |
| 3             | INLET    | 40 | 54  | 66  | 76  | 72   | 67   | 60   | 50   | 78  |
|               | OUTLET   | 39 | 55  | 69  | 71  | 70   | 67   | 60   | 50   | 76  |
|               | RADIATED | 24 | 41  | 46  | 49  | 53   | 53   | 43   | 32   | 57  |
| 4             | INLET    | 41 | 49  | 61  | 71  | 69   | 65   | 60   | 49   | 74  |
|               | OUTLET   | 41 | 49  | 65  | 67  | 68   | 65   | 60   | 48   | 73  |
|               | RADIATED | 32 | 42  | 47  | 53  | 52   | 54   | 46   | 35   | 58  |
| 5             | INLET    | 41 | 51  | 61  | 71  | 68   | 64   | 58   | 47   | 74  |
|               | OUTLET   | 40 | 52  | 66  | 66  | 67   | 64   | 58   | 47   | 72  |
|               | RADIATED | 32 | 43  | 48  | 53  | 51   | 53   | 44   | 33   | 58  |
| 6             | INLET    | 38 | 54  | 63  | 72  | 69   | 63   | 56   | 47   | 75  |
|               | OUTLET   | 37 | 57  | 66  | 67  | 67   | 64   | 56   | 46   | 72  |
|               | RADIATED | 27 | 46  | 48  | 53  | 51   | 52   | 42   | 32   | 58  |
| 7             | INLET    | 35 | 45  | 55  | 65  | 62   | 58   | 51   | 39   | 68  |
|               | OUTLET   | 34 | 45  | 58  | 60  | 60   | 58   | 51   | 38   | 65  |
|               | RADIATED | 29 | 41  | 42  | 49  | 47   | 51   | 38   | 26   | 55  |
| 8             | INLET    | 34 | 47  | 54  | 64  | 62   | 57   | 49   | 38   | 67  |
|               | OUTLET   | 33 | 49  | 58  | 59  | 59   | 56   | 48   | 37   | 64  |
|               | RADIATED | 29 | 43  | 41  | 48  | 47   | 50   | 35   | 25   | 54  |
| 9             | INLET    | 35 | 49  | 56  | 65  | 62   | 57   | 48   | 39   | 68  |
|               | OUTLET   | 33 | 51  | 57  | 60  | 59   | 55   | 47   | 37   | 65  |
|               | RADIATED | 29 | 45  | 43  | 48  | 47   | 49   | 35   | 26   | 54  |
| 10            | INLET    | 28 | 36  | 47  | 55  | 52   | 48   | 37   | 27   | 58  |
|               | OUTLET   | 27 | 38  | 51  | 51  | 50   | 46   | 36   | 26   | 56  |
|               | RADIATED | 23 | 30  | 35  | 41  | 40   | 36   | 26   | 24   | 45  |
| 11            | INLET    | 28 | 38  | 47  | 54  | 52   | 46   | 36   | 27   | 57  |
|               | OUTLET   | 28 | 39  | 49  | 50  | 50   | 44   | 34   | 26   | 55  |
|               | RADIATED | 24 | 31  | 34  | 40  | 39   | 34   | 25   | 23   | 44  |
| 12            | INLET    | 33 | 39  | 48  | 54  | 51   | 44   | 36   | 26   | 57  |
|               | OUTLET   | 34 | 40  | 47  | 49  | 48   | 42   | 33   | 26   | 53  |
|               | RADIATED | 28 | 32  | 36  | 39  | 38   | 32   | 25   | 23   | 44  |

**PERFORMANCE CURVES - ACOUSTIC CHARACTERISTICS**

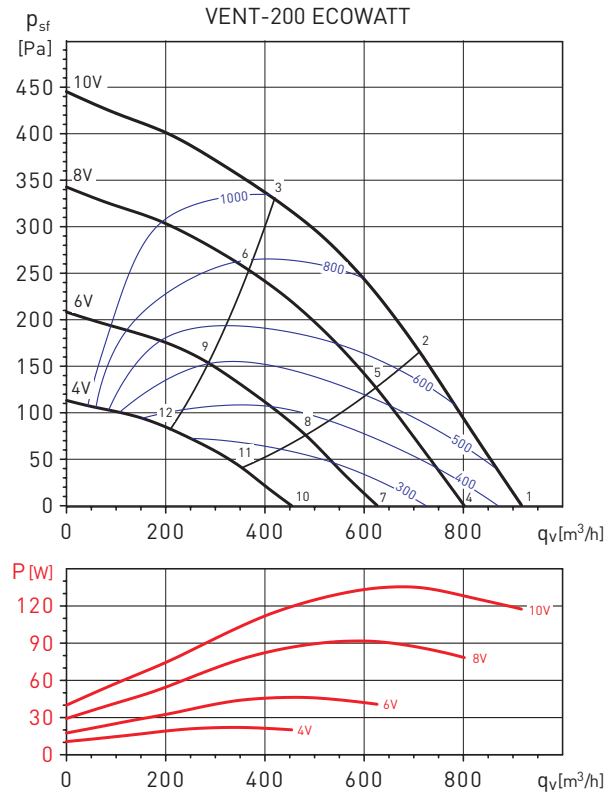
- $q_v$ : Airflow in  $m^3/h$ .
- $p_{sf}$ : Static pressure in Pa.
- P: Input power in W.
- SFP: Specific fan power in  $W/m^3/s$  (blue curves).
- Performance data in accordance with ISO 5801:1997.



| Working point |          | 63 | 125 | 250 | 500 | 1000 | 2000 | 4000 | 8000 | LwA |
|---------------|----------|----|-----|-----|-----|------|------|------|------|-----|
| 1             | INLET    | 41 | 50  | 64  | 74  | 73   | 69   | 66   | 54   | 78  |
|               | OUTLET   | 41 | 49  | 67  | 71  | 71   | 69   | 65   | 54   | 76  |
|               | RADIATED | 19 | 32  | 41  | 48  | 50   | 57   | 50   | 39   | 59  |
| 2             | INLET    | 43 | 50  | 64  | 72  | 71   | 68   | 62   | 51   | 76  |
|               | OUTLET   | 41 | 50  | 69  | 69  | 70   | 68   | 62   | 51   | 75  |
|               | RADIATED | 21 | 32  | 42  | 46  | 48   | 56   | 46   | 35   | 57  |
| 3             | INLET    | 41 | 53  | 63  | 74  | 71   | 66   | 60   | 49   | 76  |
|               | OUTLET   | 40 | 55  | 67  | 70  | 69   | 66   | 60   | 49   | 74  |
|               | RADIATED | 19 | 35  | 41  | 48  | 48   | 54   | 44   | 33   | 56  |
| 4             | INLET    | 39 | 47  | 61  | 71  | 69   | 66   | 61   | 49   | 74  |
|               | OUTLET   | 39 | 46  | 64  | 67  | 67   | 66   | 61   | 49   | 73  |
|               | RADIATED | 24 | 31  | 44  | 46  | 50   | 60   | 46   | 35   | 61  |
| 5             | INLET    | 38 | 48  | 60  | 70  | 68   | 65   | 59   | 47   | 73  |
|               | OUTLET   | 38 | 49  | 64  | 66  | 66   | 66   | 58   | 46   | 72  |
|               | RADIATED | 23 | 33  | 43  | 44  | 49   | 60   | 44   | 33   | 60  |
| 6             | INLET    | 37 | 48  | 57  | 66  | 63   | 60   | 52   | 41   | 69  |
|               | OUTLET   | 36 | 50  | 59  | 62  | 61   | 61   | 51   | 41   | 67  |
|               | RADIATED | 23 | 35  | 39  | 42  | 46   | 55   | 38   | 29   | 56  |
| 7             | INLET    | 33 | 42  | 54  | 65  | 61   | 58   | 53   | 39   | 67  |
|               | OUTLET   | 32 | 44  | 56  | 61  | 60   | 60   | 52   | 39   | 65  |
|               | RADIATED | 22 | 33  | 36  | 43  | 47   | 53   | 39   | 29   | 54  |
| 8             | INLET    | 32 | 46  | 53  | 63  | 61   | 57   | 49   | 37   | 66  |
|               | OUTLET   | 32 | 49  | 56  | 59  | 59   | 59   | 49   | 37   | 64  |
|               | RADIATED | 21 | 37  | 35  | 41  | 46   | 52   | 36   | 27   | 53  |
| 9             | INLET    | 33 | 42  | 50  | 58  | 55   | 54   | 44   | 32   | 61  |
|               | OUTLET   | 33 | 44  | 52  | 54  | 53   | 55   | 42   | 32   | 60  |
|               | RADIATED | 23 | 34  | 34  | 39  | 43   | 48   | 31   | 24   | 50  |
| 10            | INLET    | 25 | 38  | 48  | 55  | 52   | 51   | 40   | 28   | 58  |
|               | OUTLET   | 26 | 37  | 50  | 51  | 50   | 52   | 38   | 27   | 57  |
|               | RADIATED | 17 | 30  | 38  | 40  | 44   | 46   | 27   | 25   | 49  |
| 11            | INLET    | 27 | 39  | 45  | 53  | 51   | 51   | 38   | 27   | 57  |
|               | OUTLET   | 28 | 39  | 48  | 49  | 49   | 52   | 36   | 26   | 56  |
|               | RADIATED | 19 | 31  | 36  | 38  | 43   | 46   | 25   | 24   | 48  |
| 12            | INLET    | 31 | 39  | 44  | 52  | 49   | 50   | 38   | 26   | 56  |
|               | OUTLET   | 32 | 38  | 46  | 47  | 47   | 51   | 35   | 26   | 54  |
|               | RADIATED | 22 | 31  | 34  | 36  | 41   | 45   | 25   | 23   | 47  |

**PERFORMANCE CURVES - ACOUSTIC CHARACTERISTICS**

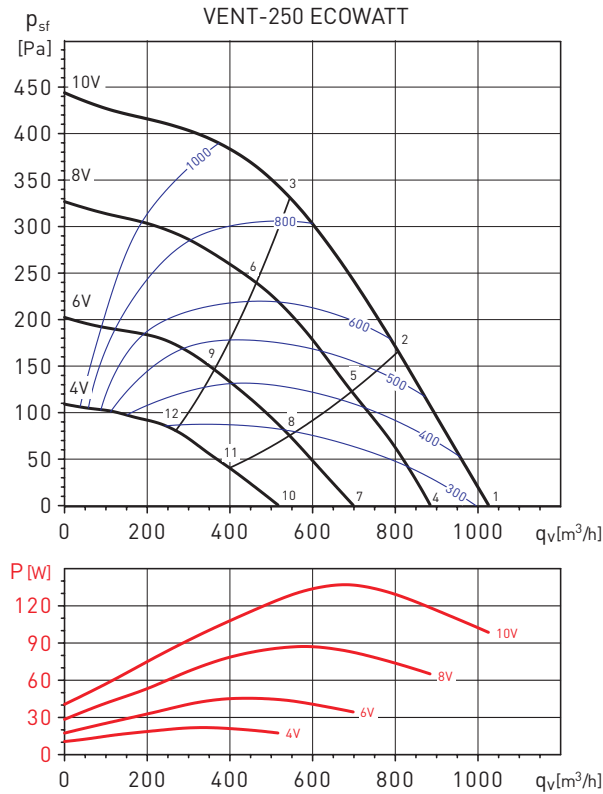
- $q_v$ : Airflow in  $m^3/h$ .
- $p_{sf}$ : Static pressure in Pa.
- P: Input power in W.
- SFP: Specific fan power in  $W/m^3/s$  (blue curves).
- Performance data in accordance with ISO 5801:1997.



| Working point |          | 63 | 125 | 250 | 500 | 1000 | 2000 | 4000 | 8000 | LwA |
|---------------|----------|----|-----|-----|-----|------|------|------|------|-----|
| 1             | INLET    | 42 | 52  | 62  | 70  | 68   | 65   | 65   | 61   | 74  |
|               | OUTLET   | 41 | 51  | 66  | 67  | 68   | 69   | 66   | 60   | 75  |
|               | RADIATED | 30 | 36  | 40  | 48  | 46   | 53   | 48   | 43   | 56  |
| 2             | INLET    | 37 | 50  | 63  | 70  | 68   | 64   | 63   | 57   | 74  |
|               | OUTLET   | 39 | 51  | 66  | 67  | 68   | 68   | 64   | 56   | 74  |
|               | RADIATED | 25 | 34  | 41  | 49  | 46   | 51   | 46   | 40   | 55  |
| 3             | INLET    | 38 | 55  | 65  | 70  | 69   | 64   | 61   | 55   | 74  |
|               | OUTLET   | 38 | 56  | 69  | 68  | 69   | 68   | 63   | 53   | 75  |
|               | RADIATED | 26 | 40  | 43  | 49  | 47   | 51   | 44   | 37   | 55  |
| 4             | INLET    | 40 | 49  | 59  | 65  | 65   | 62   | 62   | 56   | 70  |
|               | OUTLET   | 39 | 48  | 63  | 64  | 64   | 66   | 63   | 55   | 71  |
|               | RADIATED | 36 | 38  | 40  | 45  | 43   | 51   | 46   | 40   | 54  |
| 5             | INLET    | 35 | 46  | 60  | 64  | 64   | 61   | 59   | 52   | 69  |
|               | OUTLET   | 36 | 48  | 63  | 63  | 64   | 65   | 61   | 51   | 70  |
|               | RADIATED | 30 | 36  | 40  | 44  | 42   | 49   | 43   | 36   | 52  |
| 6             | INLET    | 36 | 52  | 62  | 65  | 65   | 60   | 57   | 50   | 70  |
|               | OUTLET   | 36 | 53  | 65  | 64  | 65   | 64   | 59   | 49   | 71  |
|               | RADIATED | 32 | 42  | 42  | 45  | 43   | 48   | 41   | 34   | 52  |
| 7             | INLET    | 36 | 42  | 54  | 58  | 60   | 57   | 55   | 45   | 64  |
|               | OUTLET   | 35 | 41  | 57  | 57  | 59   | 61   | 57   | 44   | 65  |
|               | RADIATED | 30 | 30  | 40  | 38  | 39   | 47   | 41   | 35   | 50  |
| 8             | INLET    | 33 | 41  | 54  | 58  | 58   | 56   | 52   | 43   | 63  |
|               | OUTLET   | 34 | 42  | 57  | 57  | 58   | 59   | 54   | 42   | 64  |
|               | RADIATED | 27 | 29  | 40  | 37  | 38   | 46   | 38   | 32   | 48  |
| 9             | INLET    | 35 | 47  | 55  | 58  | 59   | 54   | 49   | 41   | 63  |
|               | OUTLET   | 35 | 47  | 59  | 57  | 59   | 58   | 52   | 40   | 65  |
|               | RADIATED | 29 | 34  | 42  | 38  | 38   | 45   | 35   | 30   | 48  |
| 10            | INLET    | 29 | 35  | 46  | 53  | 53   | 52   | 44   | 34   | 58  |
|               | OUTLET   | 29 | 34  | 48  | 50  | 51   | 54   | 45   | 32   | 58  |
|               | RADIATED | 25 | 27  | 35  | 35  | 39   | 44   | 35   | 32   | 46  |
| 11            | INLET    | 30 | 35  | 46  | 52  | 52   | 50   | 41   | 32   | 56  |
|               | OUTLET   | 31 | 35  | 49  | 49  | 50   | 51   | 42   | 30   | 56  |
|               | RADIATED | 26 | 27  | 35  | 34  | 37   | 41   | 32   | 30   | 44  |
| 12            | INLET    | 37 | 37  | 47  | 51  | 51   | 46   | 39   | 29   | 56  |
|               | OUTLET   | 36 | 36  | 51  | 49  | 50   | 49   | 41   | 28   | 56  |
|               | RADIATED | 33 | 29  | 36  | 33  | 37   | 37   | 30   | 27   | 43  |

PERFORMANCE CURVES - ACOUSTIC CHARACTERISTICS

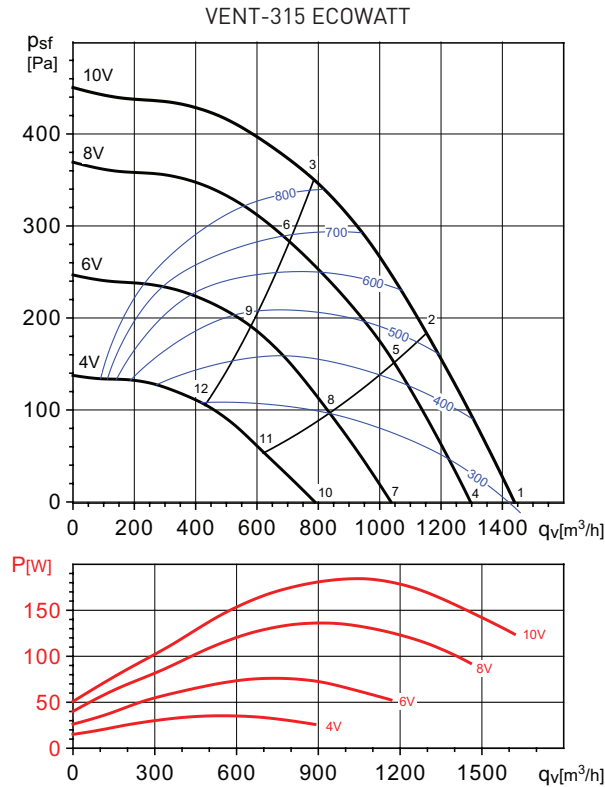
- $q_v$ : Airflow in  $m^3/h$ .
- $p_{sf}$ : Static pressure in Pa.
- P: Input power in W.
- SFP: Specific fan power in  $W/m^3/s$  (blue curves).
- Performance data in accordance with ISO 5801:1997.



| Working point |          | 63 | 125 | 250 | 500 | 1000 | 2000 | 4000 | 8000 | LwA |
|---------------|----------|----|-----|-----|-----|------|------|------|------|-----|
| 1             | INLET    | 39 | 52  | 63  | 73  | 73   | 70   | 68   | 62   | 78  |
|               | OUTLET   | 40 | 52  | 65  | 73  | 73   | 74   | 70   | 63   | 79  |
|               | RADIATED | 30 | 45  | 43  | 55  | 54   | 55   | 54   | 54   | 46  |
| 2             | INLET    | 36 | 52  | 61  | 71  | 71   | 68   | 67   | 59   | 76  |
|               | OUTLET   | 38 | 52  | 64  | 71  | 71   | 72   | 68   | 60   | 77  |
|               | RADIATED | 28 | 45  | 41  | 53  | 52   | 53   | 52   | 43   | 59  |
| 3             | INLET    | 38 | 54  | 64  | 68  | 68   | 64   | 63   | 55   | 73  |
|               | OUTLET   | 39 | 57  | 66  | 70  | 69   | 69   | 64   | 56   | 75  |
|               | RADIATED | 30 | 47  | 44  | 51  | 49   | 49   | 48   | 39   | 56  |
| 4             | INLET    | 37 | 50  | 60  | 69  | 70   | 66   | 64   | 57   | 74  |
|               | OUTLET   | 38 | 51  | 62  | 73  | 70   | 70   | 66   | 58   | 76  |
|               | RADIATED | 26 | 43  | 40  | 52  | 50   | 52   | 50   | 42   | 57  |
| 5             | INLET    | 34 | 49  | 58  | 67  | 68   | 64   | 62   | 53   | 72  |
|               | OUTLET   | 36 | 51  | 61  | 70  | 68   | 68   | 64   | 54   | 74  |
|               | RADIATED | 23 | 42  | 39  | 50  | 48   | 50   | 48   | 38   | 55  |
| 6             | INLET    | 37 | 51  | 60  | 64  | 65   | 61   | 58   | 50   | 69  |
|               | OUTLET   | 38 | 54  | 63  | 67  | 65   | 65   | 60   | 50   | 72  |
|               | RADIATED | 26 | 45  | 41  | 47  | 45   | 47   | 43   | 34   | 53  |
| 7             | INLET    | 33 | 45  | 56  | 61  | 63   | 60   | 58   | 46   | 67  |
|               | OUTLET   | 35 | 44  | 62  | 69  | 64   | 64   | 60   | 47   | 72  |
|               | RADIATED | 27 | 36  | 39  | 44  | 44   | 45   | 44   | 35   | 51  |
| 8             | INLET    | 31 | 43  | 54  | 59  | 61   | 58   | 54   | 44   | 65  |
|               | OUTLET   | 33 | 43  | 58  | 66  | 62   | 63   | 57   | 45   | 69  |
|               | RADIATED | 25 | 34  | 37  | 42  | 42   | 44   | 40   | 33   | 49  |
| 9             | INLET    | 38 | 44  | 55  | 57  | 58   | 55   | 50   | 40   | 63  |
|               | OUTLET   | 38 | 44  | 57  | 62  | 60   | 60   | 52   | 41   | 66  |
|               | RADIATED | 32 | 35  | 38  | 40  | 38   | 41   | 36   | 30   | 46  |
| 10            | INLET    | 30 | 37  | 50  | 56  | 56   | 53   | 46   | 34   | 61  |
|               | OUTLET   | 35 | 44  | 62  | 69  | 64   | 64   | 60   | 47   | 72  |
|               | RADIATED | 22 | 29  | 37  | 39  | 37   | 40   | 37   | 32   | 46  |
| 11            | INLET    | 35 | 38  | 48  | 54  | 55   | 51   | 43   | 32   | 59  |
|               | OUTLET   | 33 | 43  | 58  | 66  | 62   | 63   | 57   | 45   | 69  |
|               | RADIATED | 27 | 30  | 35  | 38  | 36   | 39   | 33   | 30   | 44  |
| 12            | INLET    | 35 | 38  | 47  | 51  | 52   | 48   | 39   | 29   | 56  |
|               | OUTLET   | 38 | 44  | 57  | 62  | 60   | 60   | 52   | 41   | 66  |
|               | RADIATED | 27 | 29  | 34  | 34  | 33   | 35   | 30   | 27   | 41  |

PERFORMANCE CURVES - ACOUSTIC CHARACTERISTICS

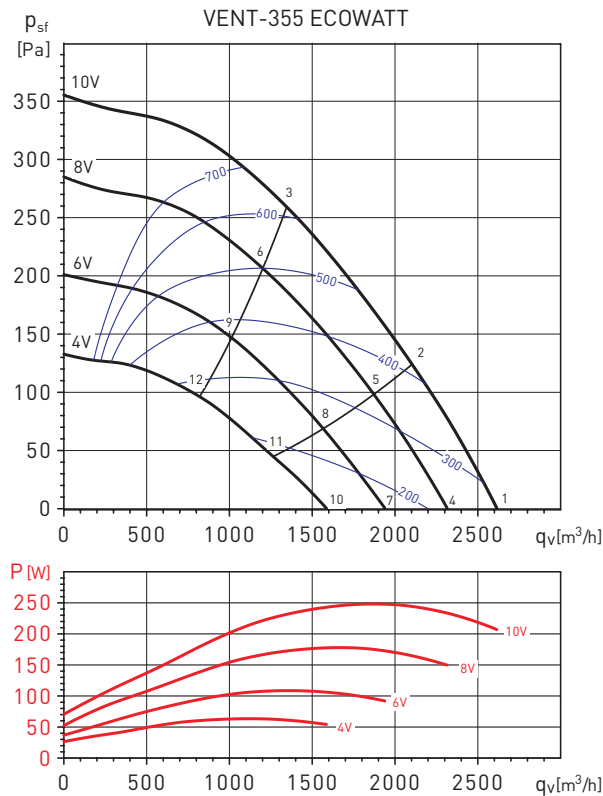
- $q_v$ : Airflow in  $m^3/h$ .
- $p_{st}$ : Static pressure in Pa.
- P: Input power in W.
- SFP: Specific fan power in  $W/m^3/s$  (blue curves).
- Performance data in accordance with ISO 5801:1997.



| Working point |          | 63 | 125 | 250 | 500 | 1000 | 2000 | 4000 | 8000 | LwA |
|---------------|----------|----|-----|-----|-----|------|------|------|------|-----|
| 1             | INLET    | 41 | 59  | 68  | 72  | 74   | 72   | 68   | 66   | 79  |
|               | OUTLET   | 41 | 52  | 73  | 73  | 74   | 74   | 69   | 65   | 80  |
|               | RADIATED | 28 | 39  | 43  | 55  | 56   | 58   | 55   | 50   | 63  |
| 2             | INLET    | 41 | 57  | 67  | 71  | 71   | 70   | 67   | 63   | 77  |
|               | OUTLET   | 40 | 52  | 70  | 71  | 72   | 72   | 67   | 62   | 78  |
|               | RADIATED | 27 | 40  | 42  | 53  | 54   | 57   | 54   | 47   | 61  |
| 3             | INLET    | 39 | 55  | 66  | 70  | 69   | 67   | 64   | 58   | 75  |
|               | OUTLET   | 40 | 50  | 69  | 71  | 70   | 69   | 65   | 58   | 76  |
|               | RADIATED | 26 | 38  | 41  | 53  | 52   | 54   | 52   | 42   | 59  |
| 4             | INLET    | 40 | 55  | 67  | 69  | 71   | 69   | 66   | 63   | 76  |
|               | OUTLET   | 41 | 54  | 69  | 71  | 71   | 71   | 66   | 61   | 77  |
|               | RADIATED | 31 | 39  | 42  | 53  | 54   | 56   | 54   | 48   | 61  |
| 5             | INLET    | 41 | 56  | 66  | 68  | 69   | 67   | 65   | 59   | 74  |
|               | OUTLET   | 42 | 55  | 67  | 70  | 69   | 70   | 65   | 58   | 76  |
|               | RADIATED | 32 | 40  | 40  | 52  | 52   | 54   | 53   | 44   | 59  |
| 6             | INLET    | 38 | 53  | 66  | 67  | 67   | 64   | 62   | 55   | 73  |
|               | OUTLET   | 39 | 49  | 69  | 68  | 67   | 67   | 62   | 55   | 74  |
|               | RADIATED | 29 | 38  | 41  | 51  | 49   | 52   | 50   | 40   | 57  |
| 7             | INLET    | 38 | 53  | 62  | 65  | 66   | 63   | 62   | 53   | 71  |
|               | OUTLET   | 40 | 54  | 67  | 63  | 65   | 64   | 62   | 53   | 72  |
|               | RADIATED | 27 | 39  | 42  | 49  | 50   | 51   | 51   | 38   | 57  |
| 8             | INLET    | 39 | 51  | 60  | 63  | 64   | 62   | 61   | 51   | 69  |
|               | OUTLET   | 43 | 53  | 63  | 62  | 63   | 63   | 60   | 50   | 70  |
|               | RADIATED | 28 | 38  | 40  | 48  | 49   | 50   | 50   | 35   | 55  |
| 9             | INLET    | 36 | 49  | 61  | 61  | 62   | 59   | 57   | 48   | 67  |
|               | OUTLET   | 37 | 50  | 64  | 61  | 62   | 61   | 57   | 47   | 69  |
|               | RADIATED | 24 | 36  | 41  | 46  | 46   | 47   | 46   | 33   | 53  |
| 10            | INLET    | 35 | 47  | 55  | 58  | 59   | 57   | 58   | 43   | 65  |
|               | OUTLET   | 36 | 48  | 56  | 55  | 58   | 58   | 56   | 41   | 64  |
|               | RADIATED | 27 | 36  | 36  | 44  | 44   | 45   | 47   | 34   | 52  |
| 11            | INLET    | 32 | 42  | 53  | 55  | 57   | 55   | 50   | 39   | 62  |
|               | OUTLET   | 36 | 46  | 55  | 56  | 59   | 58   | 53   | 46   | 64  |
|               | RADIATED | 25 | 31  | 34  | 42  | 41   | 44   | 39   | 30   | 48  |
| 12            | INLET    | 30 | 42  | 54  | 54  | 55   | 54   | 47   | 37   | 60  |
|               | OUTLET   | 35 | 44  | 55  | 53  | 55   | 55   | 47   | 37   | 61  |
|               | RADIATED | 23 | 31  | 35  | 40  | 40   | 42   | 36   | 28   | 46  |

PERFORMANCE CURVES - ACOUSTIC CHARACTERISTICS

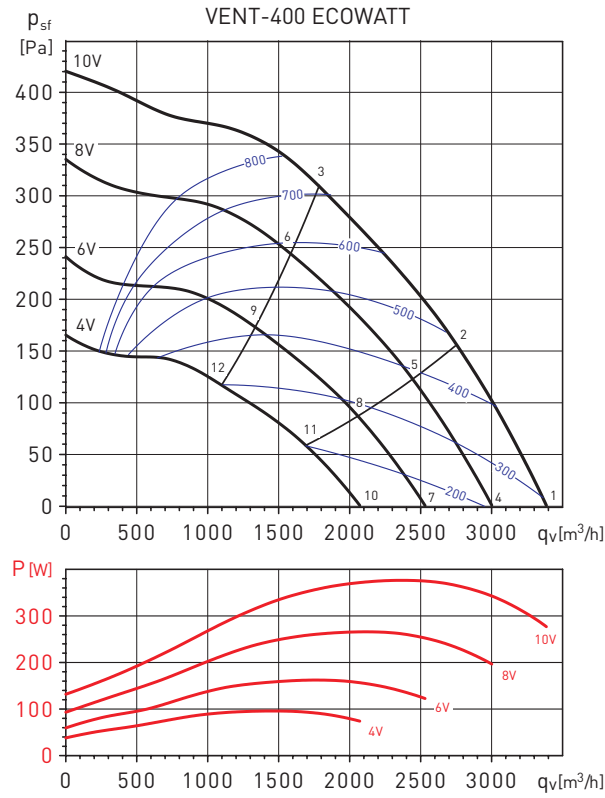
- $q_v$ : Airflow in  $m^3/h$ .
- $p_{sf}$ : Static pressure in Pa.
- P: Input power in W.
- SFP: Specific fan power in  $W/m^3/s$  (blue curves).
- Performance data in accordance with ISO 5801:1997.



| Working point |          | 63 | 125 | 250 | 500 | 1000 | 2000 | 4000 | 8000 | LwA |
|---------------|----------|----|-----|-----|-----|------|------|------|------|-----|
| 1             | INLET    | 40 | 58  | 68  | 72  | 68   | 66   | 61   | 52   | 75  |
|               | OUTLET   | 42 | 61  | 70  | 72  | 74   | 69   | 61   | 53   | 78  |
|               | RADIATED | 29 | 42  | 55  | 57  | 63   | 57   | 48   | 41   | 66  |
| 2             | INLET    | 38 | 56  | 65  | 70  | 66   | 63   | 57   | 49   | 73  |
|               | OUTLET   | 40 | 59  | 68  | 70  | 72   | 66   | 57   | 50   | 75  |
|               | RADIATED | 27 | 41  | 52  | 55  | 61   | 54   | 45   | 38   | 63  |
| 3             | INLET    | 40 | 58  | 60  | 65  | 61   | 59   | 53   | 46   | 69  |
|               | OUTLET   | 40 | 58  | 60  | 65  | 61   | 59   | 53   | 46   | 69  |
|               | RADIATED | 29 | 42  | 47  | 50  | 57   | 50   | 41   | 36   | 59  |
| 4             | INLET    | 38 | 60  | 64  | 69  | 66   | 63   | 56   | 48   | 72  |
|               | OUTLET   | 39 | 64  | 63  | 69  | 71   | 66   | 57   | 49   | 75  |
|               | RADIATED | 28 | 47  | 47  | 55  | 60   | 56   | 44   | 40   | 62  |
| 5             | INLET    | 36 | 57  | 61  | 67  | 63   | 59   | 53   | 44   | 70  |
|               | OUTLET   | 37 | 61  | 60  | 66  | 68   | 62   | 53   | 45   | 72  |
|               | RADIATED | 25 | 44  | 44  | 52  | 57   | 53   | 41   | 36   | 59  |
| 6             | INLET    | 38 | 56  | 57  | 62  | 58   | 55   | 49   | 41   | 65  |
|               | OUTLET   | 37 | 59  | 57  | 62  | 64   | 59   | 50   | 42   | 68  |
|               | RADIATED | 27 | 43  | 40  | 47  | 52   | 48   | 37   | 34   | 55  |
| 7             | INLET    | 35 | 59  | 61  | 67  | 61   | 59   | 51   | 42   | 69  |
|               | OUTLET   | 36 | 63  | 59  | 66  | 66   | 61   | 51   | 42   | 71  |
|               | RADIATED | 31 | 41  | 46  | 54  | 55   | 52   | 41   | 38   | 59  |
| 8             | INLET    | 33 | 56  | 59  | 64  | 58   | 56   | 48   | 39   | 67  |
|               | OUTLET   | 34 | 58  | 56  | 64  | 63   | 58   | 47   | 39   | 68  |
|               | RADIATED | 29 | 38  | 44  | 51  | 52   | 49   | 38   | 35   | 56  |
| 9             | INLET    | 34 | 53  | 54  | 58  | 53   | 52   | 44   | 36   | 62  |
|               | OUTLET   | 33 | 55  | 53  | 59  | 59   | 54   | 44   | 36   | 64  |
|               | RADIATED | 29 | 35  | 39  | 45  | 47   | 45   | 34   | 32   | 51  |
| 10            | INLET    | 32 | 48  | 60  | 62  | 56   | 52   | 44   | 35   | 65  |
|               | OUTLET   | 32 | 49  | 59  | 62  | 60   | 55   | 43   | 36   | 66  |
|               | RADIATED | 27 | 40  | 45  | 48  | 53   | 45   | 39   | 34   | 55  |
| 11            | INLET    | 30 | 47  | 58  | 60  | 52   | 49   | 40   | 33   | 63  |
|               | OUTLET   | 32 | 47  | 57  | 59  | 57   | 51   | 40   | 33   | 63  |
|               | RADIATED | 24 | 38  | 44  | 45  | 50   | 42   | 35   | 32   | 52  |
| 12            | INLET    | 30 | 46  | 53  | 56  | 49   | 45   | 37   | 31   | 59  |
|               | OUTLET   | 31 | 48  | 52  | 56  | 55   | 48   | 37   | 31   | 60  |
|               | RADIATED | 24 | 37  | 39  | 42  | 46   | 38   | 32   | 30   | 49  |

**PERFORMANCE CURVES - ACOUSTIC CHARACTERISTICS**

- $q_v$ : Airflow in  $m^3/h$ .
- $p_{sf}$ : Static pressure in Pa.
- P: Input power in W.
- SFP: Specific fan power in  $W/m^3/s$  (blue curves).
- Performance data in accordance with ISO 5801:1997.



| Working point |          | 63 | 125 | 250 | 500 | 1000 | 2000 | 4000 | 8000 | LwA |
|---------------|----------|----|-----|-----|-----|------|------|------|------|-----|
| 1             | INLET    | 45 | 65  | 69  | 73  | 67   | 69   | 65   | 52   | 77  |
|               | OUTLET   | 46 | 73  | 68  | 74  | 72   | 70   | 65   | 54   | 79  |
|               | RADIATED | 39 | 55  | 57  | 59  | 61   | 57   | 49   | 37   | 65  |
| 2             | INLET    | 43 | 66  | 68  | 72  | 66   | 65   | 59   | 50   | 75  |
|               | OUTLET   | 44 | 73  | 67  | 73  | 71   | 67   | 59   | 51   | 78  |
|               | RADIATED | 37 | 56  | 56  | 58  | 59   | 54   | 44   | 35   | 64  |
| 3             | INLET    | 46 | 65  | 64  | 68  | 64   | 60   | 56   | 50   | 72  |
|               | OUTLET   | 44 | 70  | 65  | 71  | 70   | 65   | 57   | 50   | 76  |
|               | RADIATED | 40 | 55  | 52  | 55  | 57   | 49   | 41   | 34   | 61  |
| 4             | INLET    | 42 | 60  | 69  | 69  | 64   | 66   | 58   | 48   | 74  |
|               | OUTLET   | 43 | 66  | 67  | 71  | 69   | 66   | 58   | 49   | 75  |
|               | RADIATED | 35 | 55  | 57  | 57  | 59   | 55   | 42   | 33   | 64  |
| 5             | INLET    | 40 | 59  | 67  | 69  | 62   | 60   | 53   | 45   | 72  |
|               | OUTLET   | 41 | 65  | 66  | 71  | 67   | 62   | 54   | 46   | 74  |
|               | RADIATED | 33 | 54  | 55  | 56  | 57   | 49   | 38   | 30   | 62  |
| 6             | INLET    | 44 | 60  | 62  | 67  | 61   | 57   | 52   | 45   | 70  |
|               | OUTLET   | 41 | 63  | 64  | 69  | 67   | 61   | 53   | 44   | 73  |
|               | RADIATED | 37 | 54  | 51  | 54  | 56   | 46   | 37   | 31   | 60  |
| 7             | INLET    | 39 | 55  | 64  | 64  | 61   | 62   | 51   | 43   | 69  |
|               | OUTLET   | 40 | 57  | 65  | 66  | 65   | 63   | 52   | 45   | 71  |
|               | RADIATED | 32 | 48  | 53  | 51  | 55   | 51   | 35   | 30   | 59  |
| 8             | INLET    | 37 | 55  | 62  | 62  | 59   | 56   | 47   | 39   | 67  |
|               | OUTLET   | 38 | 56  | 63  | 64  | 64   | 58   | 48   | 41   | 69  |
|               | RADIATED | 30 | 47  | 52  | 49  | 53   | 44   | 32   | 27   | 57  |
| 9             | INLET    | 40 | 55  | 58  | 60  | 56   | 53   | 47   | 40   | 64  |
|               | OUTLET   | 41 | 57  | 60  | 63  | 63   | 57   | 47   | 39   | 68  |
|               | RADIATED | 34 | 48  | 47  | 47  | 50   | 41   | 32   | 27   | 55  |
| 10            | INLET    | 39 | 52  | 57  | 58  | 58   | 54   | 43   | 36   | 64  |
|               | OUTLET   | 42 | 54  | 57  | 60  | 61   | 56   | 44   | 37   | 65  |
|               | RADIATED | 39 | 46  | 47  | 46  | 53   | 42   | 31   | 29   | 55  |
| 11            | INLET    | 40 | 51  | 56  | 56  | 55   | 49   | 40   | 33   | 61  |
|               | OUTLET   | 41 | 53  | 55  | 58  | 58   | 51   | 41   | 34   | 63  |
|               | RADIATED | 39 | 45  | 46  | 44  | 49   | 37   | 28   | 26   | 53  |
| 12            | INLET    | 38 | 50  | 53  | 55  | 53   | 47   | 40   | 34   | 59  |
|               | OUTLET   | 40 | 53  | 54  | 57  | 57   | 50   | 40   | 33   | 62  |
|               | RADIATED | 37 | 45  | 43  | 43  | 47   | 35   | 28   | 26   | 51  |

**MOUNTING ACCESSORIES**



**DEF-VENT**  
Protection grille.



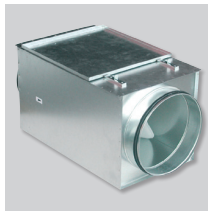
**ACOP-VENT**  
Flexible connectors.



**MFL-G4**  
G4 filtration box.



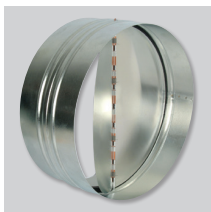
**MBE**  
Electric heaters.



**MFL-F**  
Filtration box for  
MFR bag filters F5,  
F6 or F7 grade.



**SIL**  
Circular sound  
attenuators.



**CAR**  
Backdraught  
shutters.



**MPC**  
Flow detectors.

**ELECTRICAL ACCESSORIES**



**CONTROL ECOWATT  
AC/4A**  
Control element for  
demand controlled  
ventilation systems.



**REB-ECOWATT**  
Speed controller for  
fans fitted with EC  
motor.



**SC02-A**  
CO<sub>2</sub> and temperature  
sensor.  
**SC02-AD**  
CO<sub>2</sub> and temperature  
sensor, with display.  
**SCHT-AD**  
CO<sub>2</sub>, temperature  
and relative humidity  
sensor with display.



**CPFL-S / CPFL-E**  
Presence detector.



**TDP-S/TDP-D/TDP-PI**  
Presure sensor.



**REMP**  
Motorised damper.